

OFFICE SPACE FOR LEASE

4125 Humphrey | St. Louis, MO 63116

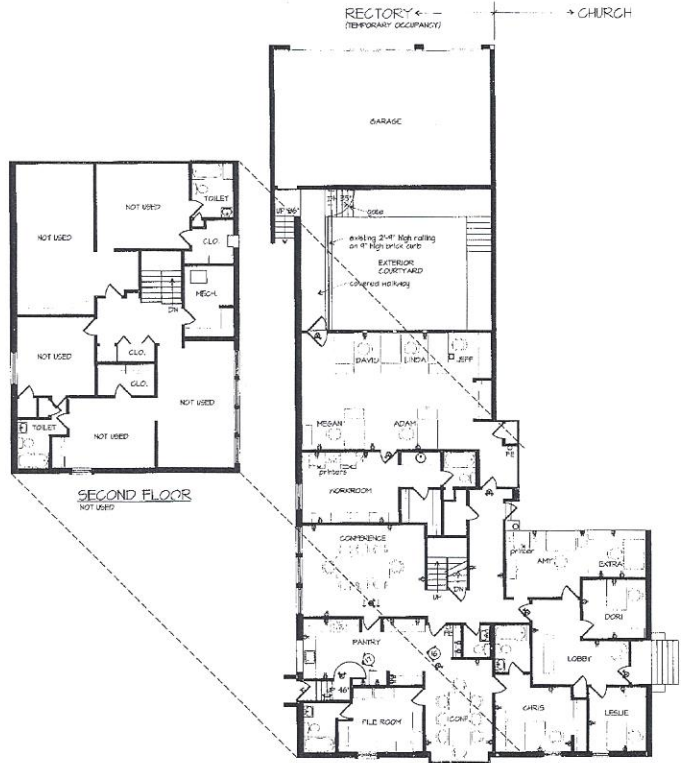
For more information contact Mike Cromie at 314-571-7664, mcromie@ndconsulting.com or Susan Sauer at 314-571-7654, ssauer@ndconsulting.com



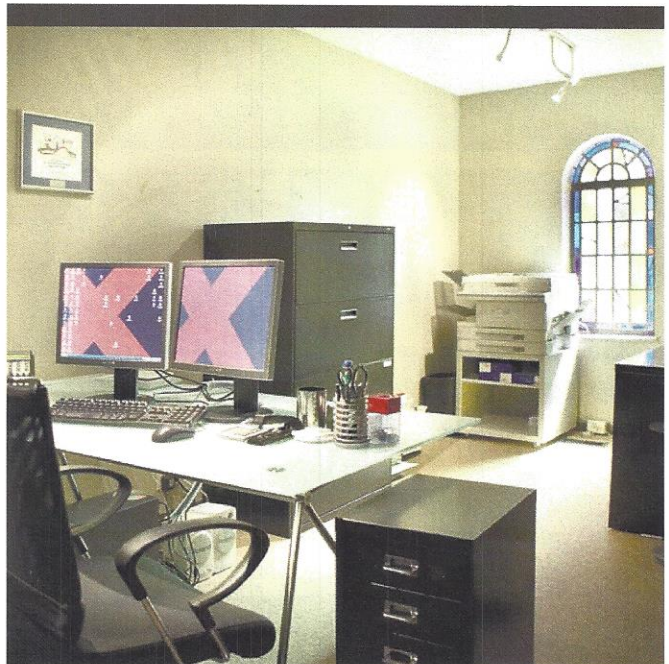
ANNUAL RENT: \$9.50 per sq. ft. plus utilities

TOTAL SF: Approx 4,708 sq. ft. on 1st & 2nd floors
Approx 2,869 sq. ft. on 1st floor
Approx 1,839 sq. ft. on 2nd floor
(partial finished basement not included)

AMENITIES: Partial Kitchen: Includes DW, Refrigerator, Trash Compactor
7 Restrooms
Private, Gated Courtyard
Near Tower Grove Park
Many Local Restaurants and Shops in the Area
Approximately 3 Miles to Hwy 40 and 2 Miles to Hwy 44
Approximately 5 Miles from Downtown St. Louis
Secured Parking, 6-10 spots



FIRST FLOOR PLAN
SCALE: 1/8" = 1'-0"



FOR INFORMATION

Duffe-Nuernberger Realty

Mike Cromie

314-571-7664

mcromie@ndconsulting.com

Susan Sauer

314-571-7654

ssauer@ndconsulting.com